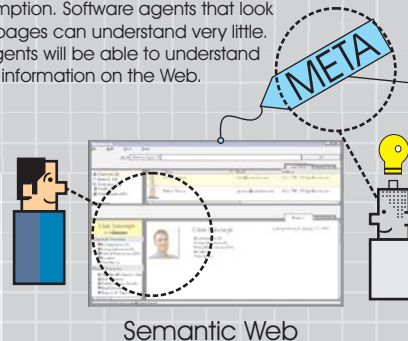




3 What was confusing, now makes perfect sense.
Currently, a Web page is developed mainly for human consumption. Software agents that look at the current pages can understand very little. In the future agents will be able to understand the majority of information on the Web.



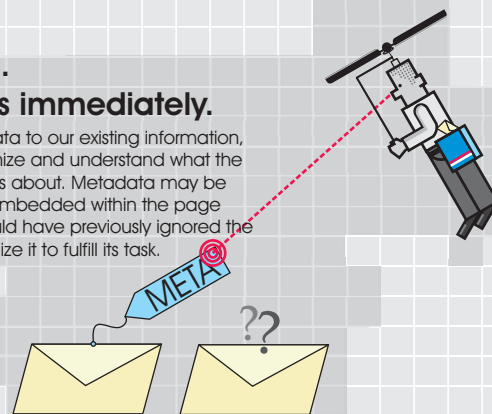
4 Ontologies give the metadata meaning.

A Semantic Web page consists of RDF and linkages to global ontologies. Agents can understand the RDF associated with a page once they have crawled the web of ontologies. It is this set of ontologies or vocabularies that act as a dictionary of sorts to the agents who are attempting to understand the terms used to describe the page. This web of ontologies exists in parallel with the Semantic Web.

Ontology
An email is a message.
An email has a subject.
An email is sent to 1 or more people.

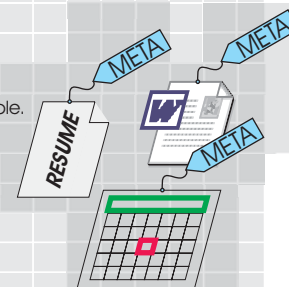
2 Add metadata.
Serve to agents immediately.

By attaching additional data to our existing information, agents are able to recognize and understand what the information is and what it is about. Metadata may be linked to a web page or embedded within the page itself. Where an agent would have previously ignored the information, it can now utilize it to fulfill its task.



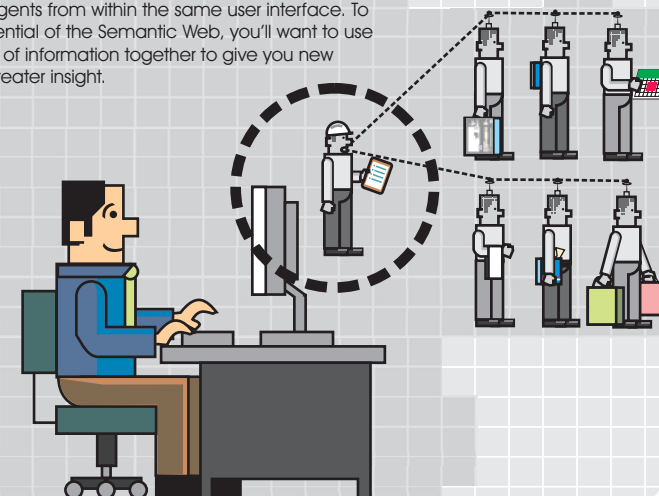
5 The Semantic Web isn't just about Web sites either!

The Semantic Web aims to make many different types of data usable. Emails, Web sites, calendars, resumes, office documents, and contacts are just some of the information resources that can be utilized by software agents if they are enhanced with metadata. Imagine what new applications are possible once agents can tell the difference between these items!



6 How will I use the Semantic Web?

In all likelihood, you'll use the Semantic Web using many different applications. You may have particular applications that use a specific type of information, like calendaring for example. Alternatively, you may choose an application that allows you to control a bevy of agents from within the same user interface. To harness the full potential of the Semantic Web, you'll want to use the different islands of information together to give you new applications and greater insight.



1 It's evolution not revolution.

The Semantic Web leverages the content and services that already exist in the World Wide Web. By extending the World Wide Web to be more usable to robots, agents or machines, new applications are now possible.

← The Semantic Web is a layer of machine understandable metadata on top of the World Wide Web

← The World Wide Web is the foundation for the emerging Semantic Web

The Semantic Web
Illustrated